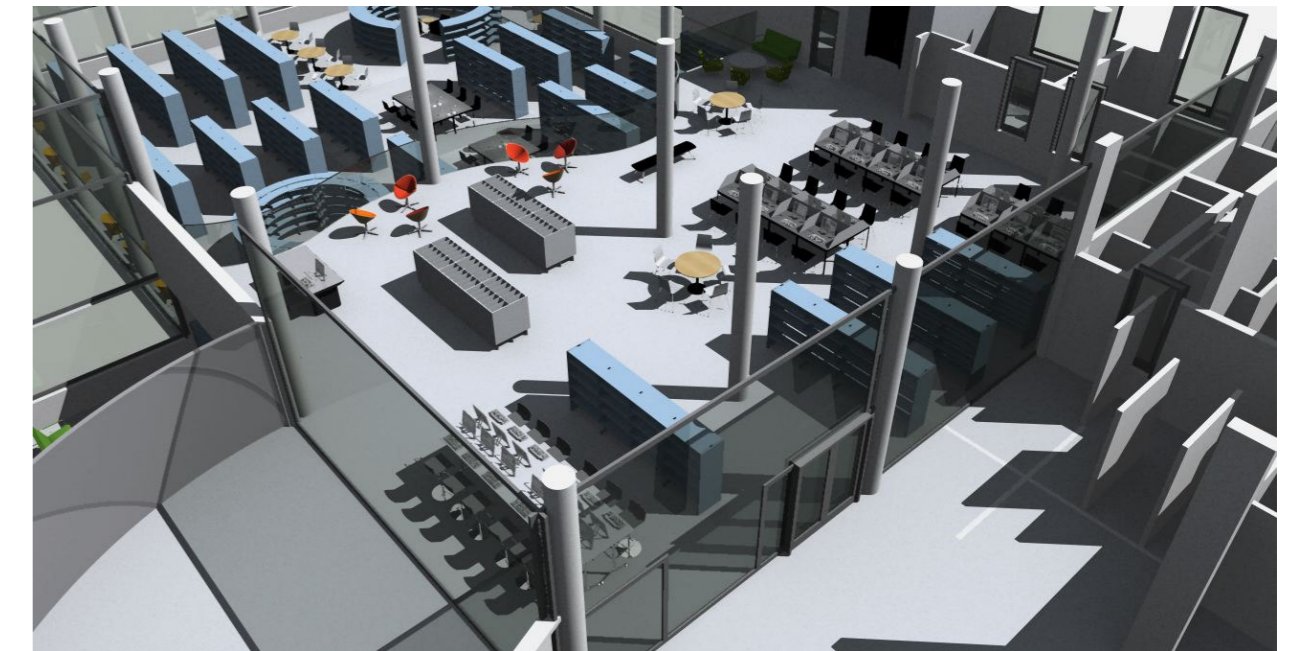




Shelves; 60/30 steel, Light Blue (Fjord), w.top and panels in painted MDF

- Pos.1  
6 Harmony, white
- Pos.2  
Concertina counter, Grey top, Orange Skirt, black front
- Pos.3  
24 Opal study table, High screen, Graffiti grey top, black base, white screen.
- Pos.4  
130 Bib chair, 120 black, 10 white
- Pos.5  
1 Eureka, orange
- Pos.6  
2 Cooper high, 400x60, white, chrome
- Pos.7  
2 Lounge table, Ø120, White top, chrome base, Lammhults
- Pos.8  
2 Cinema sofa, Green, chrome, Lammhults
- Pos.9  
7 Cinema easy chair, green, chrome, Lammhults
- Pos.10  
3 Campus cafe table, Ø105, Birch, black base, Lammhults
- Pos.11  
3 Rabami office chair, 330, dark grey
- Pos.12  
Bank bench, black, Lammhults
- Pos.13  
12 Millibar stool, grey, chrome base, Lammhults
- Pos.14  
6 Confino, 2 orange, 2 red, 2 dark red, Swedese
- Pos.15  
96 Opal study table, 80x90, Grafite grey, black base, BCI
- Pos.16  
4 Cortina easy chair, Lammhults
- Pos.17  
4 Club, swirvel base, Lammhults
- Pos.18  
Hatstand, Lammhults
- Pos.19  
2 Campus table C4, Birch, chrome, Lammhults
- Pos.20  
Cooper table 45x55, White, chrome Lammhults



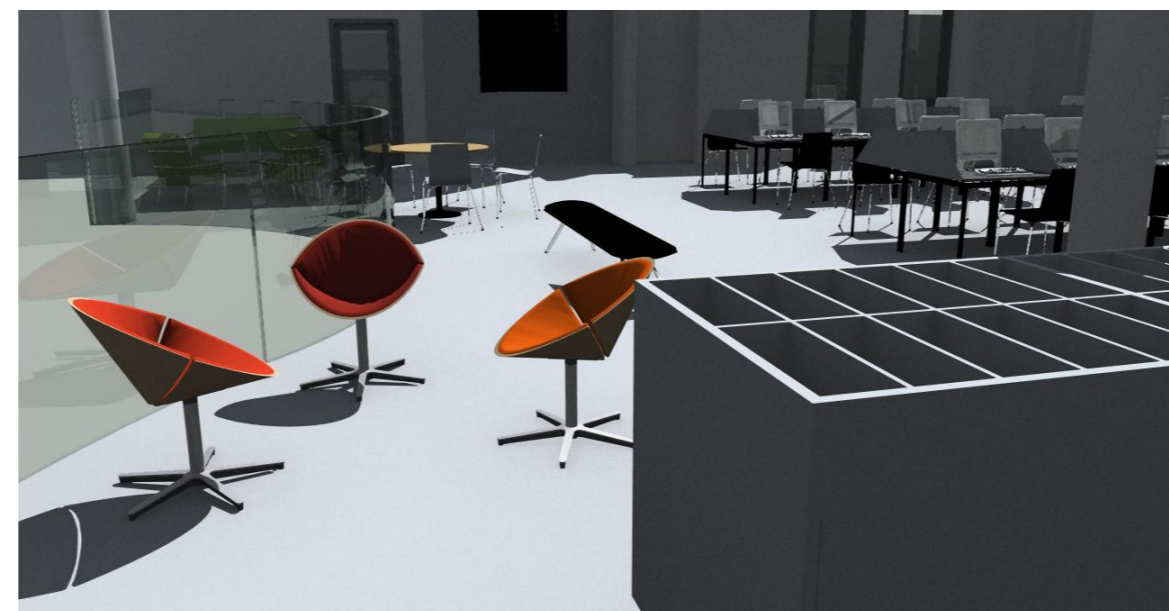
1




2



4



2

Case:	Al Mezhar		
No.:	1. floor	Scale: 1:200/A2	
ID.:	LJO	Date: 18.08.08	
Revised:	28.08.08		
<small>Confidential: Property of BCI A/S. Not to be handed over to, copied or used by third party. Two- or three dimensional reproduction of contents to be authorized by BCI A/S.</small>			
		BCI A/S Dalbækvej 1 6670 Holsted Denmark	Tel.: +45 76782611 Fax: +45 76782622 E-mail: bci@bci.dk www.bci.dk