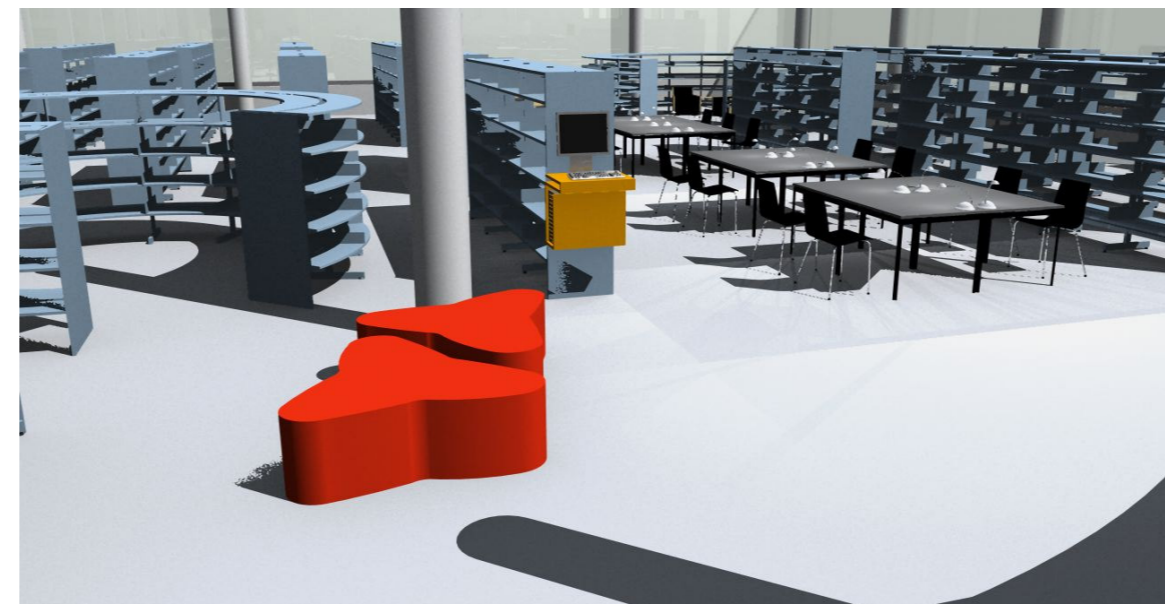
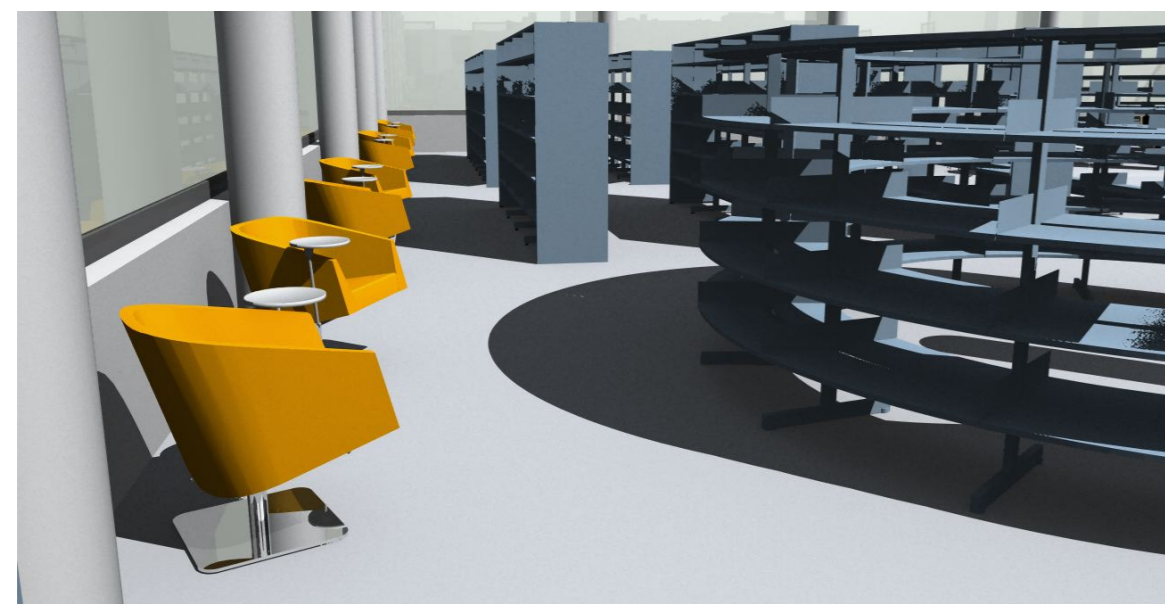
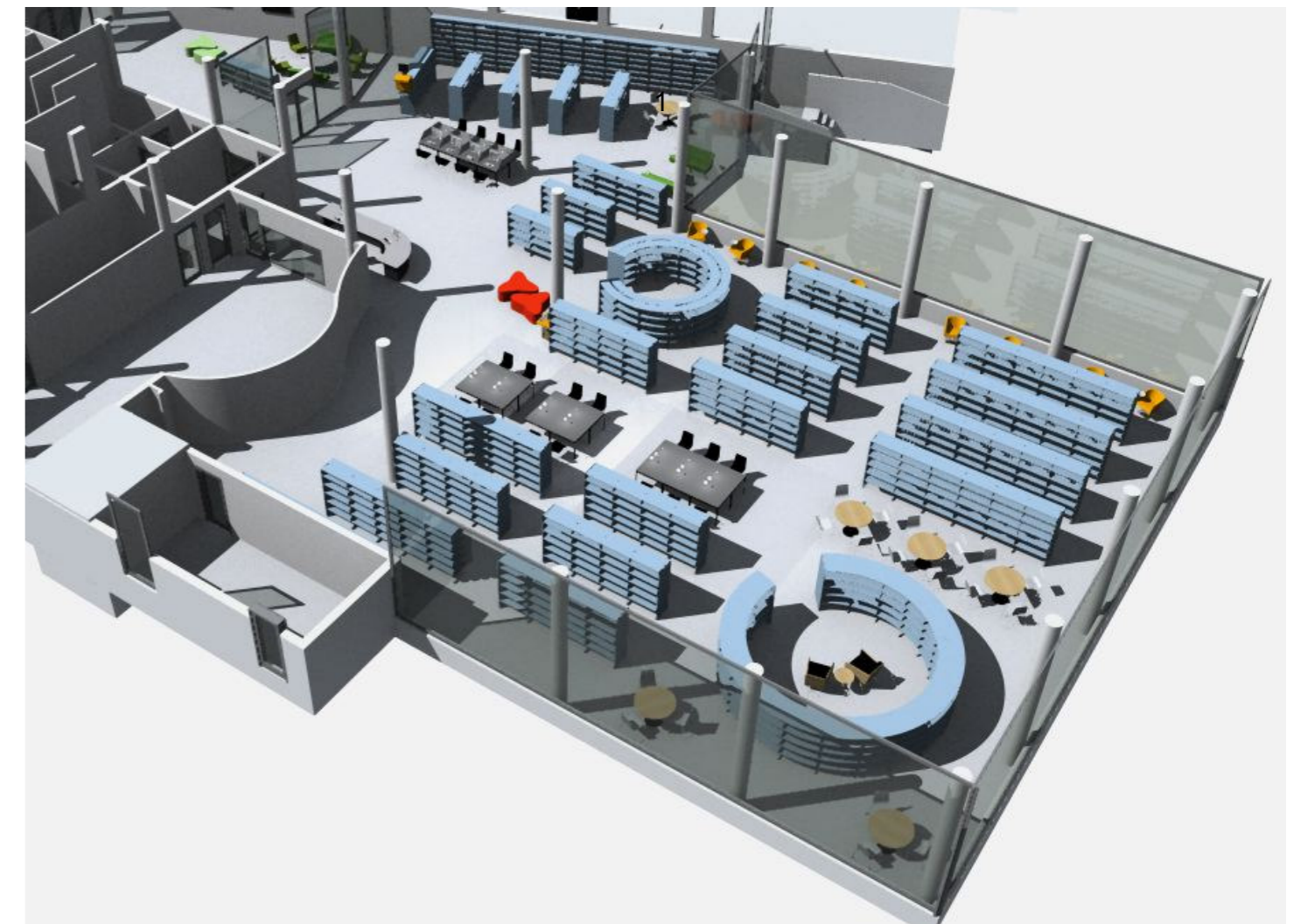



Shelves; 60/30 steel, Light Blue (Fjord), w.top and panels in painted MDF

- Pos.1
60/30, Horten display both sides, top and panel.
- Pos.2
Concertina counter, Grey top, Orange Skirt, black front
- Pos.3
32 Opal study table, High screen, Graffit grey top, black base, white screen.
- Pos.4
70 Bib chair, 48 black, 22 white
- Pos.5
3 Eureka, orange
- Pos.6
14 Opal study table with light, Graffit grey top, black base
- Pos.7
2 Lounge table, Ø120, White top, crome base, Lammhults
- Pos.8
7 Cinema sofa, Green, crome, Lammhults
- Pos.9
12 Cinema easy chair, green, crome, Lammhults
- Pos.10
4 Campus cafe table, Ø105, Birch, black base, Lammhults
- Pos.11
11 Rabami office chair, 330 , dark grey
- Pos.12
2 Campus cafe table, Ø80, Birch, blak base, Lammhults
- Pos.13
2 Cooper, h.45, 70x80, white, crome, Lammhults
- Pos.14
Cinema, Ø50, Birch, crome, Lammhults
- Pos.15
8 Club, swivel base, 4 right table, 4 left table, Orange, Lammhults
- Pos.16
2 Casino easy chair, Birch, black, Lammhults
- Pos.17
4 Pouf, 2 green, 2 red, Softline
- Pos.18
2 Opera, Abstracta
- Pos.19
Cinema table Ø80, Birch, chrome
- Pos.20
2 Island, Orange, Fat boy
- Pos.21
Puzzle, 2 table and 8 stool, Birch
- Pos.22
6 Moving Table, Marble and black base
- Pos.23
3 Campus table C4, Birch, chrome
- Pos.24
48 Quickly 140x60, white, chrome
- Pos.25
96 Campus Armchair, Birch, chrome



Case:	Al Mezhar		
No.:	Ground floor	Scale: 1:200/A2	
ID.:	LJO	Date: 18.08.08	
Revised:	28.08.08		
<small>Confidential: Property of BCI A/S. Not to be handed over to, copied or used by third party. Two- or three dimensional reproduction of contents to be authorized by BCI A/S.</small>			
	BCI A/S Dalbækvej 1 6670 Holsted Denmark	Tel.: +45 76782611 Fax: +45 76782622 E-mail: bci@bci.dk www.bci.dk	